

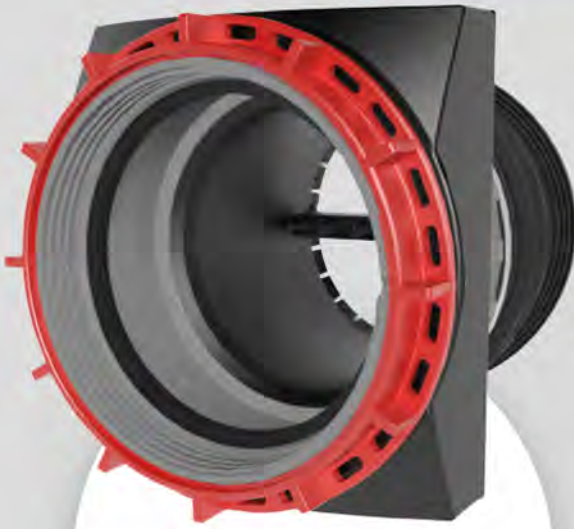


VIPSeal®

Designed to perform, engineered to last

WRc Approval
Pending

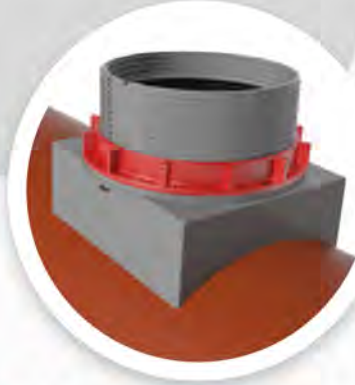
VPS Saddle Connection: *One design fits all pipes*



100%
of all connections
with **ONE (1)**
TYPE



**Rehabilitated Inliner
Pipes DN300-2400**
Inliner is sealed to the
rehabilitated pipe,
preventing leaks between
the liner and the host
pipe.



**Plastic / Cast Iron
Ductile Iron / Asbestos
Cement / Clay**
DN300 - 2400

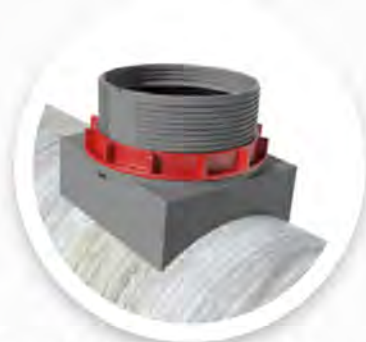
Suitable for each: Dimension | Material | Wall thickness | Pipe geometry



Concrete
DN300-2400



**Twinwall/ Corrugated
pipes DN300-2400**



GRP fibreglass
DN300-2400
& egg profile pipes



**14° Angular
Deflection**



**Available
Sockets**
- 1 1/4"
- 3-hole



**For
Hand-Held
Machines**



**For
Hand-Held
Machines**

VPS Extension

Dimension	Type Code No.	Length mm	Price £/piece
150	VPS-VL150	70	POA
200	VPS-VL200	70	POA

VPS Mounting Key

Dimension	Type Code No.	Weight kg	Price £/piece
150	VPS-MS150	1.0	POA
200	VPS-MS200	1.5	POA

VPS Torque Wrench

Area	Type Code No.	Torque Range Nm	Price £/piece
VPS DN 150-200	VPS-DMS100	5-100	POA

VPS Drill Bit

(For concrete or reinforced concrete, clay, cast iron pipes)

Drilling Dia mm	Type Code No.	Length mm	Price £/piece
187	BK-B 187	350	POA
230	BK-B 230	350	POA

VPS Hand Held Drill Bit

(For fiberglass)

Drilling Dia mm	Type Code No.	Length mm	Price £/piece
187	DBK187	100	POA
230	DBK230	100	POA

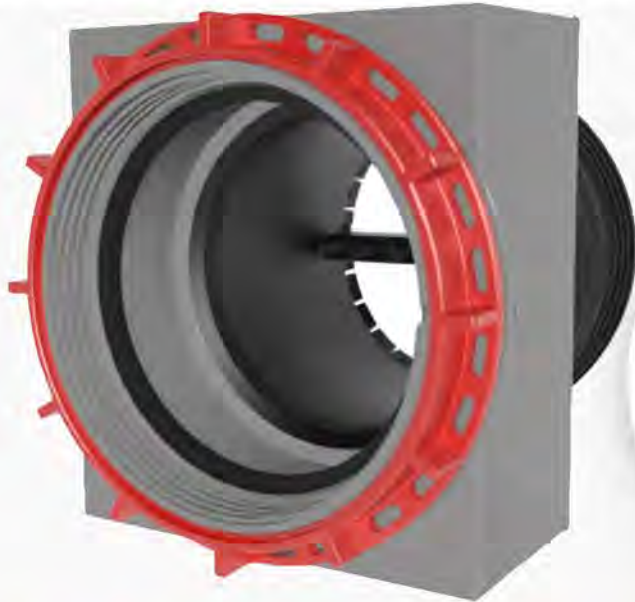
VPS Hand Held Drill Bit

(For plastic pipes PP/PE/PVC)

Drilling Dia mm	Type Code No.	Length mm	Price £/piece
187	VPS-PP187	100	POA
230	VPS-PP230	100	POA

VPS ONE for ALL

The **FIRST** interactive universal and form fit side docking system



Advantages

- Automatic adjustments
- Form fit in every position
- Waterproof 2.5bar
- Angular deflection 14°
- Spalling in the drilling hole of concrete pipes are covered



VPS - Lateral Docking System interactive

Connection Pipe	Type	Consisted Pipe			Drilling Hole	Packaging		Price
		DN	Wall Thickness			Carton	Pallet	
DN	Code No	mm	From	To	mm	Unit		€/piece
150 OD 160mm	VPS300-2800/150 TYP A	300-2800	From 50mm	INFINITELY EXTENDABLE	187 (187-189)	8	64	POA
	VPS300-2800/150 TYP B		From 7mm					POA
200 OD 200mm	VPS350-2800/200 TYP A	350-2800	From 50mm		230 (230-232)	4	40	POA
	VPS350-2800/200 TYP B		From 7mm					POA

TYP A: From wall thickness of more than 120mm extension used.
TYP B: From wall thickness of more than 80mm extension used.
 If wall thickness is less than 7mm contact for further information.

VPS Repair Connection

With the multifunctional VPS repair side connection, broken or drilled holes on all relevant consisted pipes in the dia of 300 - 2400 mm - irrespective of there wall thickness - are brought back up to date quickly, simply and professionally.



The **lost formwork** is made of stainless steel.

- Round rosette for the inside.
- Saddle plate with filing opening.
- VPS side connection.

The cavity (missing pipe wall) is filled with potting material.



VPS - Repair Connection

Scope of delivery:

- VPS Lateral docking system
- Round rosette for inside
- Saddle plate with filling opening

Connection pipe	Type	Breakout / opening on existing pipes		Existing pipe / manhole			Price
		From	To	DN	Wall thickness		
DN	Code No	mm	mm		From	To	£/piece
150 OD 160mm	SanSet150 A	190	230	300 - 2800	From 7mm	INFINITELY EXTENDABLE	POA
	SanSet150 B	220	270				POA
	SanSet150 C	250	310				POA
	SanSet150 D	280	350				POA
	SanSet150 E	320	400				POA
200 OD 200mm	SanSet200 A	235	280	400-2800	use an extension for wall thickness more than 80mm	INFINITELY EXTENDABLE	POA
	SanSet200 B	260	310				POA
	SanSet200 C	280	340				POA
	SanSet200 D	320	400				POA

For further sizes contact the sales team

Recommendation:
depending on wall thickness and size of the breakout.

- Type A: 1-2
- Type B: 2-3
- Type C: 3-4
- Type D: 4-5
- Type E: 5-6



Filling Material

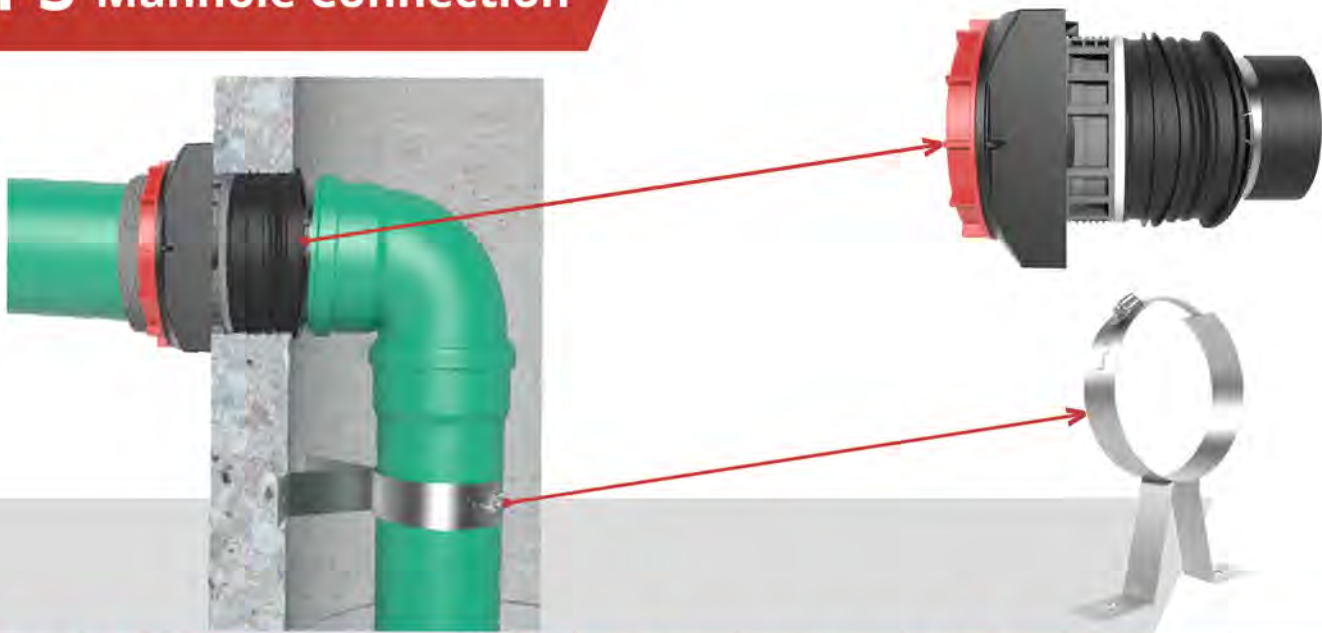
Type	Content	Price
Code No	ml	£/piece
VPS M3000	300	POA



Cartridge

Type	Weight	Price
Code No	kg	£/piece
VPS 2-K Cartridge	1.0	POA

VPS Manhole Connection



VPS - Manhole Connection with inlet pipe- drip nose

Connection Pipe	Manhole	Type	Wall Thickness Manhole		Drilling Hole	Packaging (Carton)	Price
DN	DN	Code No	From	To	mm	Unit	£/Piece
150 OD 160mm	800 - 2800	VPS Manhole 150 TYP A	50mm	INFINITELY EXTENDABLE	187 (187 - 189)	6	POA
		VPS Manhole 150 TYP B	7mm				POA
200 OD 200mm	800 - 2800	VPS Manhole 200 TYP A	50mm		230 (230 - 232)	4	POA
		VPS Manhole 200 TYP B	7mm				POA

Use VPS extension based on the following wall thickness -

TYP A > 120mm

TYP B > 80mm



The universal pipe clamp is individually adaptable on site to:

- Downpipe diameter from 150 - 250mm
- Wall distance from 10 - 100mm

Universal adjustable pipe clamp

Dimension	Type	Wall Distance	Suitable for Manholes	Dowel Hole	Price
	Code No	mm	DN	mm	£/Piece
150 - 250	UNISCHELLE 150 - 250	10 - 100	800 - 3000	10	POA

Further sizes available - contact the sales team

VPS Installation Guide

VPS Typ A + B lateral docking system

DIA 150	Fits for all consisted pipes	DIA 300 - 2800mm
DIA 200		DIA 400 - 2800mm

Drilling - Holes	187mm (for pipe dia 150mm)
	230mm (for pipe dia 200mm)



Installation - Steps

VPS Typ A: For wall thickness > 50mm
VPS Typ B: For wall thickness > 7mm
Apply lubricant in the drill hole and to outside of the rubber.

Please use the extension piece when the wall thickness is as follows:

VPS Typ A: Wall thickness > 110mm
VPS Typ B: Wall thickness > 80mm

Thread wheel should be at the top prior to installation. The internal handle should be placed across the pipes axis. Install VPS rubber seal into the pipe at a slight angle making sure the edge of the lip of the seal folds over the internal wall of the pipe. Pressure should only be placed on the Red screw when installing.

Push the complete telescopic rubber element down using the internal handle once engaged manually turn the red wheel to start compressing the seal against the inner wall.

For VPS Typ B applications make sure the two lateral moulding tabs are placed in to the borehole.

Use the assembly key and torque the screw fitting to 60Nm

Once placed and torqued correctly remove the internal handle and using your hand make sure the VPS is fitted correctly.

